



PETRAC: Loading Arms

- **Bottom Loading Arms (3"-4") : PTRC-LAB-4 & PTRC-LAB-3**
- **Top Loading Arms (3"-4") : PTRC-LAT-4 & PRC-LAT-3**



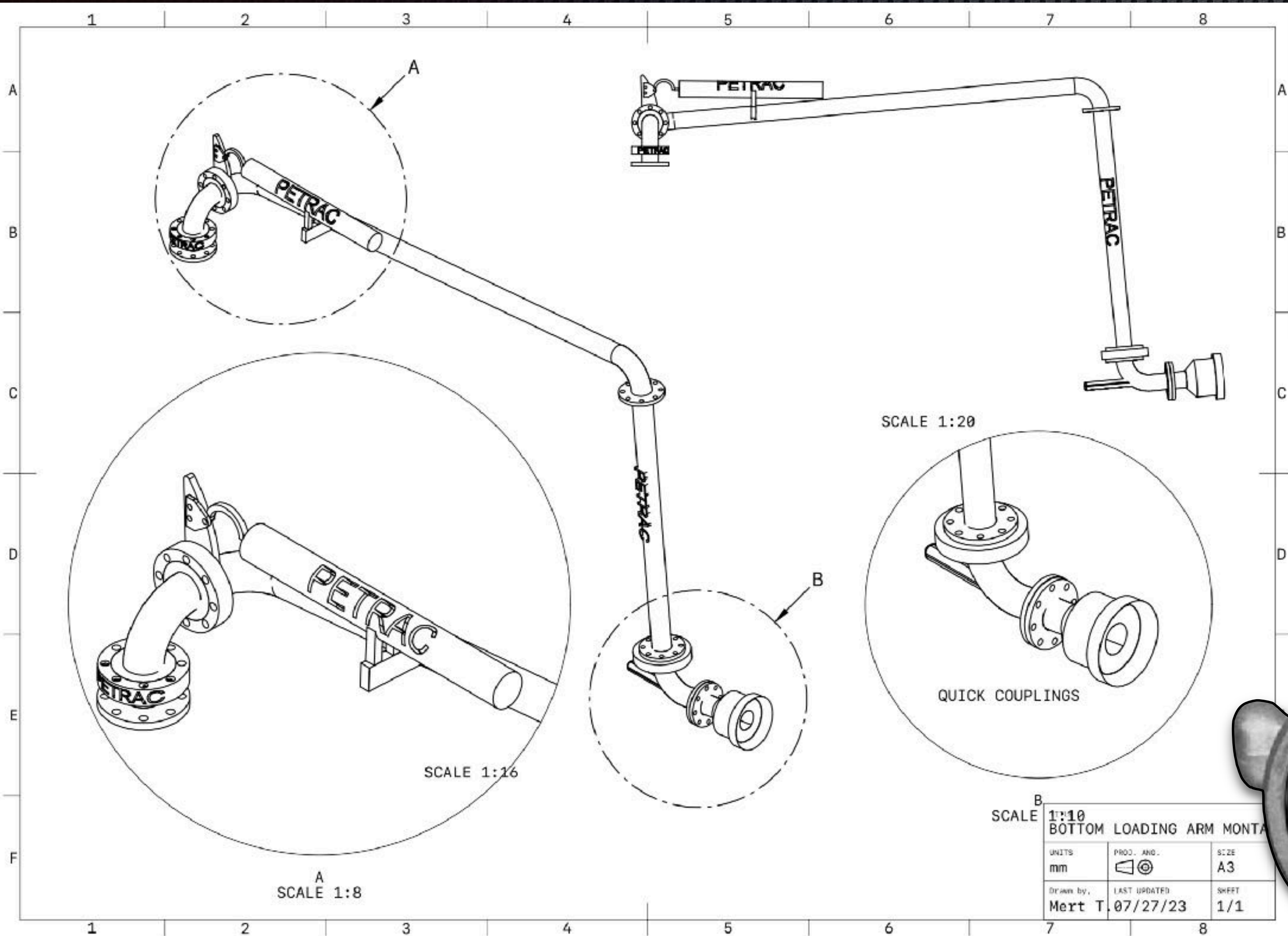
BOTTOM LOADING ARM: PTRC-LAB-3 & PTRC-LAB-4

PRODUCT FEATURES:

- **Swivel Joints:** These allow the arm to move freely in multiple directions, accommodating different tanker positions during loading and unloading.
- **Hoses:** They extend to the bottom of the tank, ensuring the liquid is delivered and minimizing the risk of splashing and foaming.
- **Vapour Recovery Connection (Optional):** This feature captures and recovers vapours displaced during the loading process, promoting environmental protection and reducing product loss.
- **Safety Interlocks:** To ensure safe operations, bottom loading arms often come with interlocking mechanisms that prevent loading until the arm is correctly connected to the tanker.
- **Drip Rings:** These are designed to catch any drips or spills that may occur during the connection or disconnection process.
- **Quick Couplings:** In the event of an emergency, these couplings allow for quick disconnection between



TECHNICAL DETAILS:

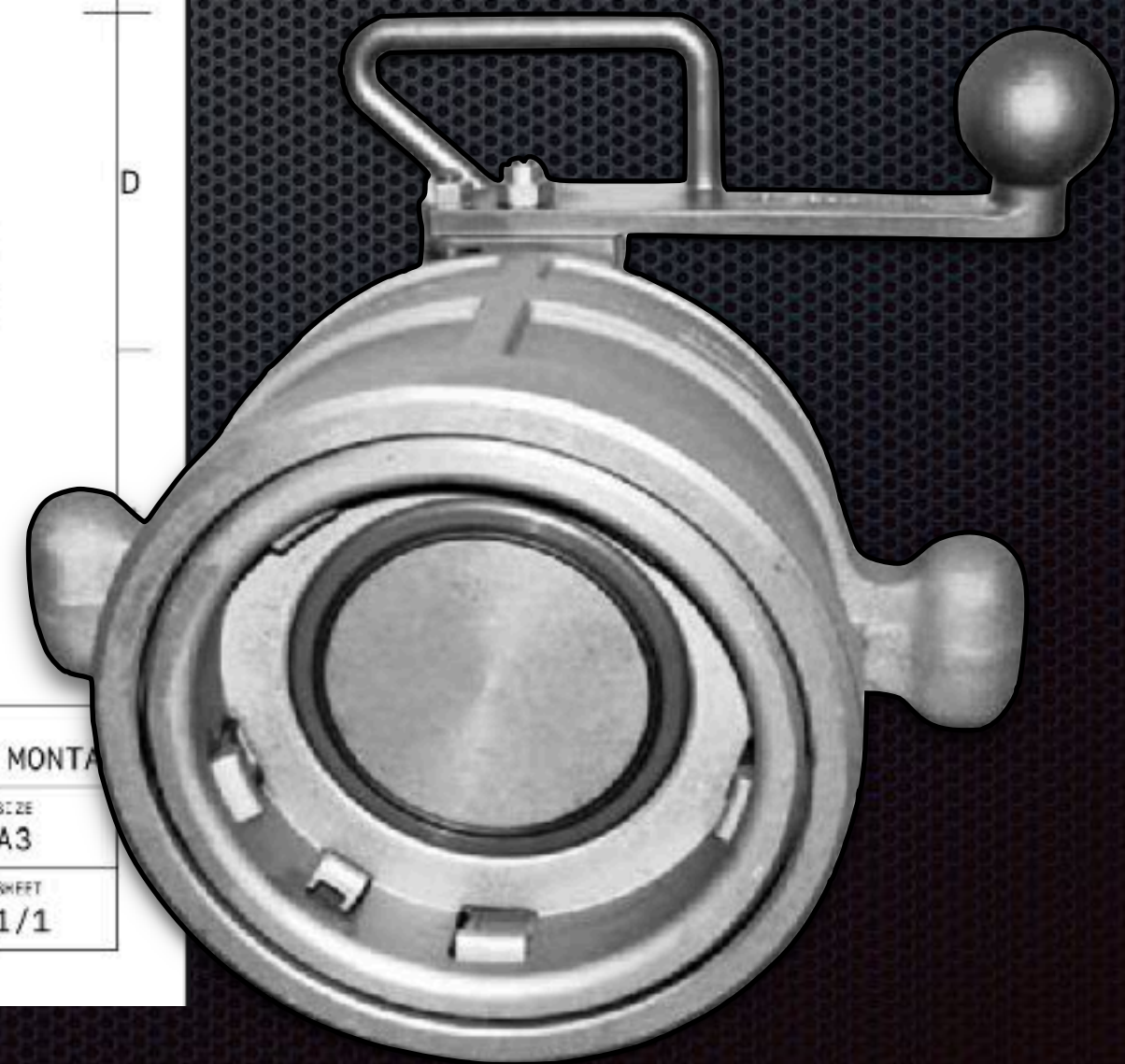


TRUCK TOP LOADING ARMS		
Model	PTRC-LAB-4	PTRC-LAB-3
Size	4"	3"
Flow rate	Max 150 m3/h	Max 75 m3/h
Material	Carbon Steel	Carbon Steel
Hose Length	Adjustable	Adjustable
Swivel Joints	Carbon Steel	Carbon Steel
Swivel Seals	VITON	VITON
Test Pressure	15 barg	7,5 barg
Quick Couplings	Included (OPW)	Included (OPW)
Operating Temperature	-40 C / +65 C	-40 C / +65 C

QUICK COUPLINGS: (OPW)

**HOSE (OIL
800):**

COMPOTEC



TOP TRUCK LOADING ARM: PTRC-LAT-3 & PTRC-LAT-4

PRODUCT FEATURES:

- * **Swivel Joints:** Top loading arms are equipped with swivel joints, allowing for movement in multiple directions. This flexibility enables easy alignment with the tanker's hatch, even when the tanker is not positioned perfectly.
- * **Loading Valve:** The loading arm is fitted with a loading valve that controls the flow of the liquid during loading or unloading operations.
- * **Vapour Return Line(Optional):** A vapor return line is used to recover vapors displaced during loading, preventing harmful emissions and reducing product loss.
- * **Drop Pipe or Loading Tube:** This extends down into the tanker to the required loading level, ensuring the liquid is deposited gently to minimize foaming or splashing.
- * **Safety Breakaway Coupling(Optional):** This safety feature allows the top loading arm to disconnect automatically from the tanker in case of emergency, such as a sudden movement or if the tanker starts to drive away while still connected.



TECHNICAL DETAILS:

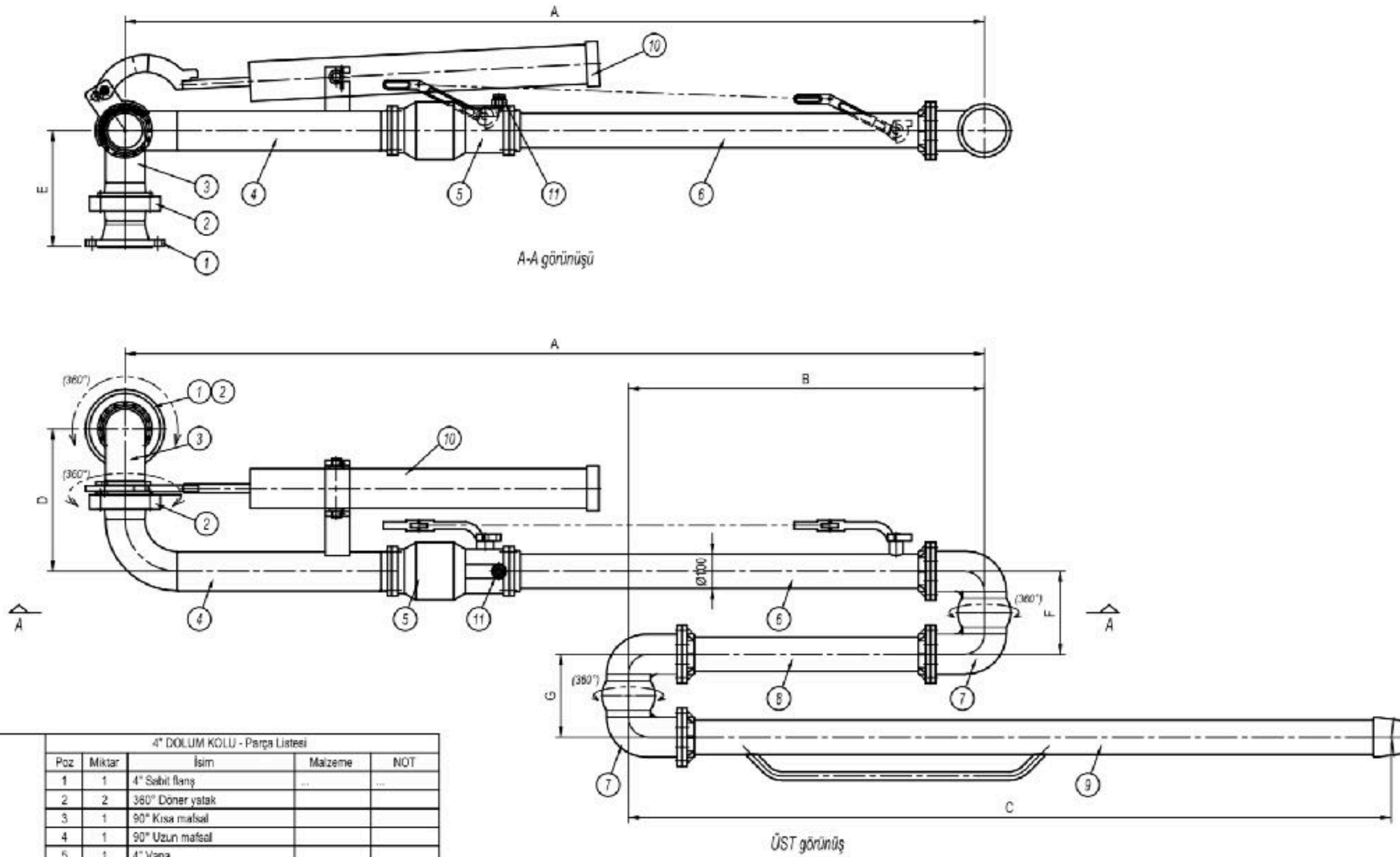


Operating Conditions

Design Pressure	10,0 barg
Test Pressure	15,0 barg
Design Temperature	-15°C / +65°C
Seal Material	Viton- NBR
Recommended Flow Rate	3" - 75 mc/h Max. 4" - 125 mc/h Max.

DIMENSIONS Standard Dimensions

Size	3"	4"
A	2100	2100
B	600	600
C	1200	1200
D	296	353
E	289	328
F	238	305
G	174	201
H	-	-
Weight	90	115

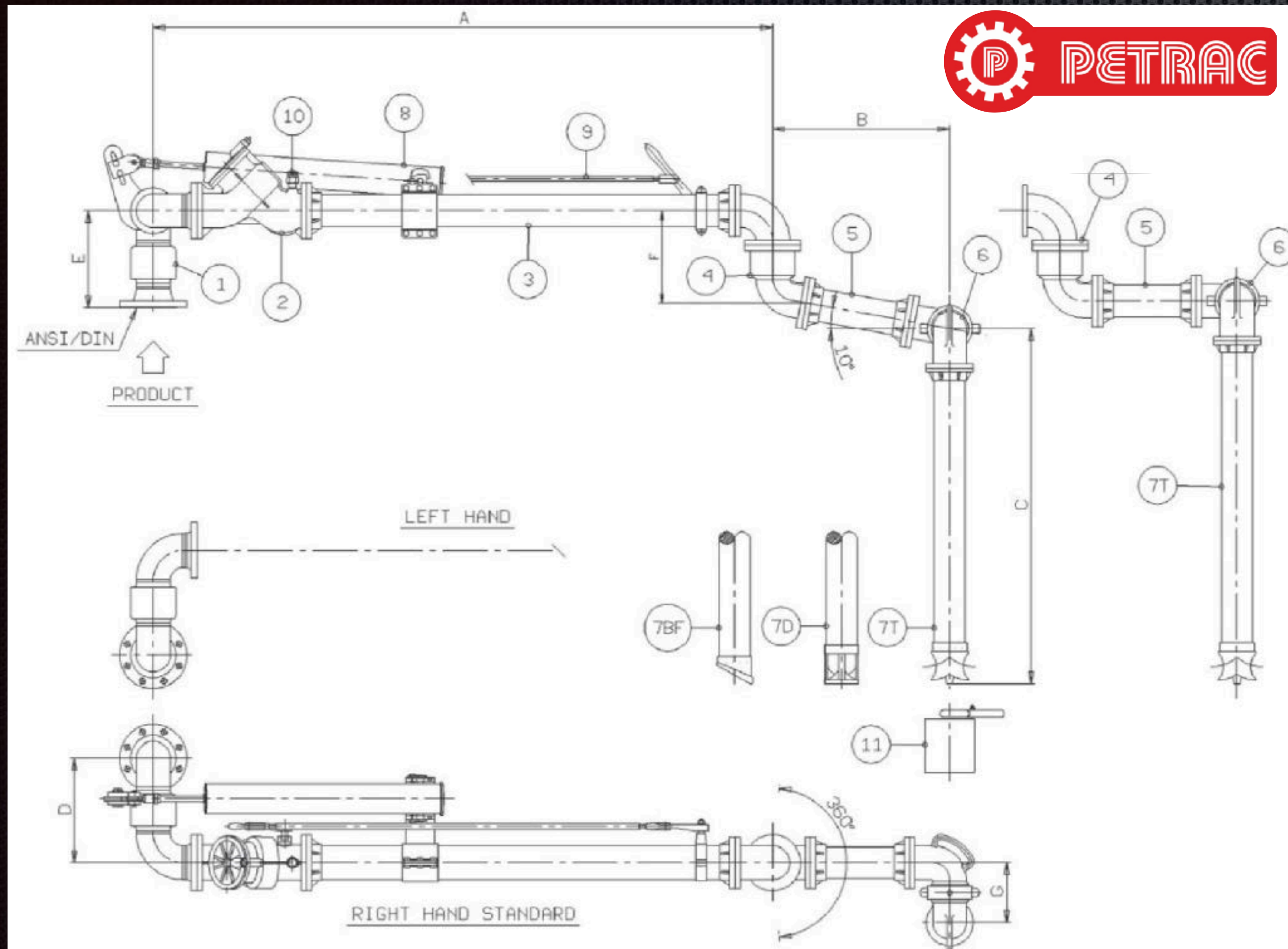


Poz	Miktar	İsim	Malzeme	NOT
1	1	4" Sabit flanj		
2	2	360° Döner yatak		
3	1	90° Kısa mafsal		
4	1	90° Uzun mafsal		
5	1	4" Vana		
6	1	Uzatma borusu		
7	2	360° İkiz döner dirsek		
8	1	Çrta bonu		
9	1	Dolum borusu		
10	1	Yayı gergisi		
11	1	Dolum nefesliği		

(0324) 234 1805



TECHNICAL DETAILS and OPTIONAL ARRANGEMENTS:

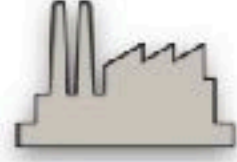


No	Description	
1	Style X5 Double Swivel Joint	4248
2	Loading Valve – (Stay / Hold-Open)	615
3	Tube Assembly	
4	Intermediate Swivel	S-4989
5	Secondary Tube Assembly – (Horizontal or Slopped)	
6	Drop Tube Swivel	615
7TD	Drop Tube with “T” Deflector	4869-TD
7FD	Drop Tube with flow deflector	4869-FD
7SD	Standard Drop Tube	4869-SD
8	Spring Balancing Cylinder	78963
9	Valve Remote Control	1258
10	¾” NPT Vacuum Breaker	1258
11	Nipper Drip Bucket	1258

WE DESIGN



WE MANUFACTURE



WE MAINTAIN

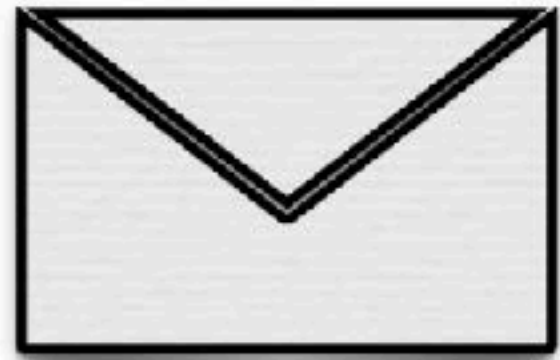


WE INSTALL



AND

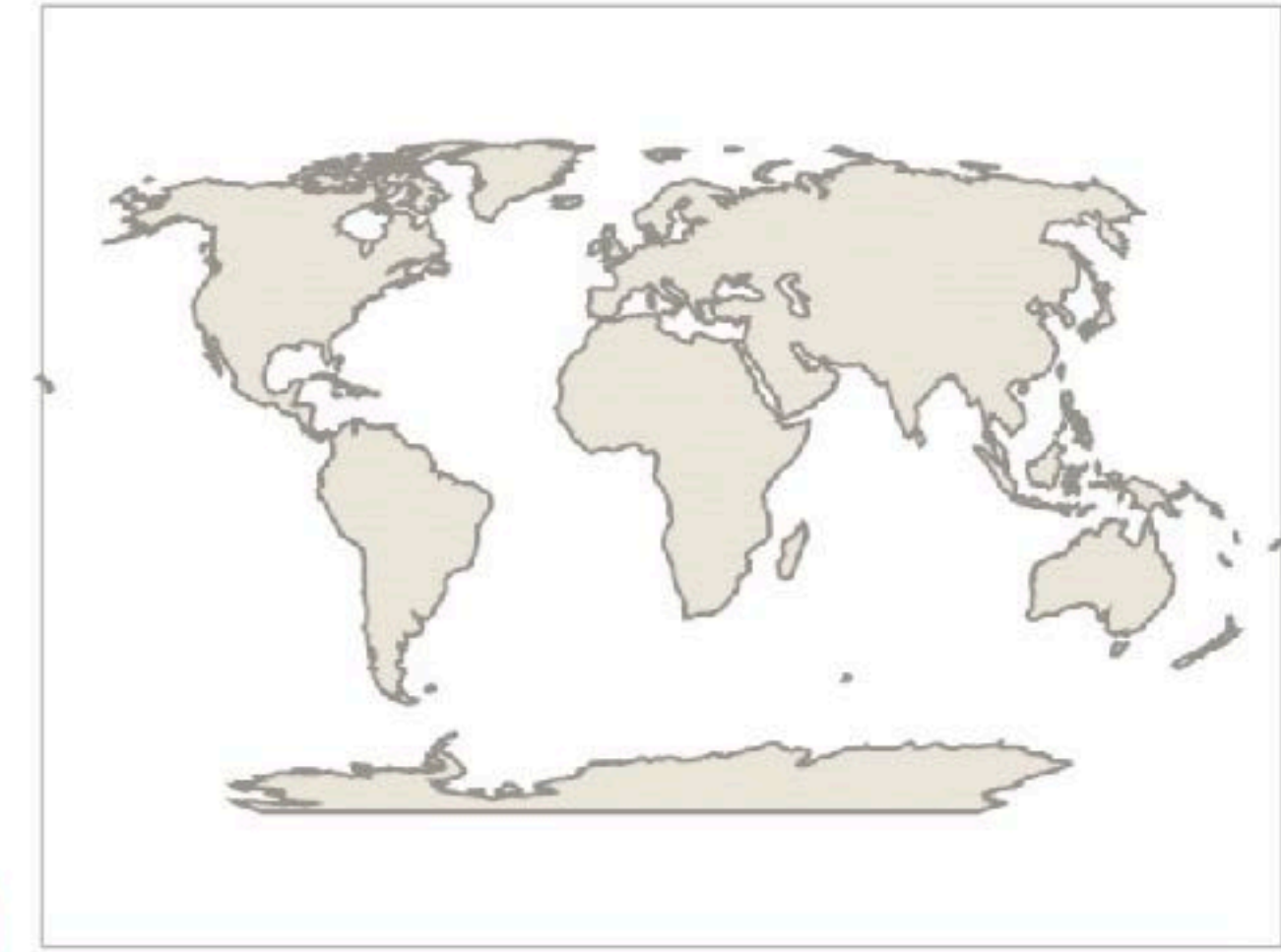
WE DELIVER



info@petrac.com.tr



ATEX
CERTIFICATED



PETRAC
FOR THE NEXT GENERATION OF
ENERGY
WWW.PETRAC.COM.TR
INFO@PETRAC.COM.TR



www.petrac.com.tr