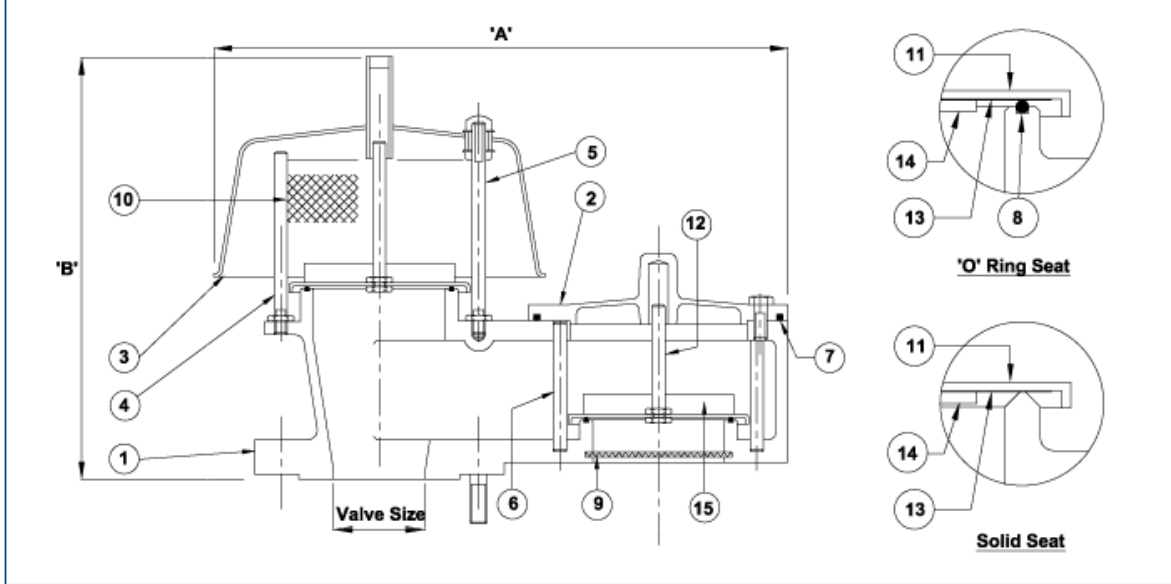


General Layout



Material Specifications

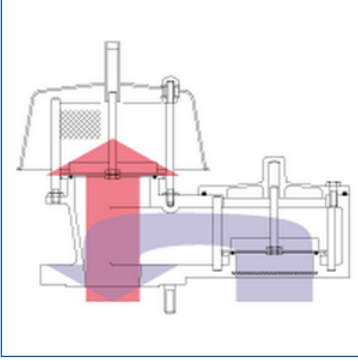
Table 1. Pressure/Vacuum Relief Valves Material Specifications

Ref	Description	Materials / Options*
1	Body	Aluminium,
2	Cover	Aluminium,
3	Hood	Aluminium,
4, 5	Pressure Guide Post	Stainless Steel,
6	Vacuum Guide Post	Stainless Steel,
7, 8	'O' Ring	PTFE,
9, 10	Mesh	Stainless Steel,
11	Pallet	Aluminium,,
12	Pallet Stem	Stainless Steel,
13	Diaphragm	PTFE, ,
14	Retaining Disc	Stainless Steel,
15	Weights	Lead, Stainless Steel,
Connection	Flange	ANSI 150#, PN16,



FİNAL KONTROL FORMU/ FINAL CONTROL FORM BASINÇ VAKUM VENTİLİ/PRESSURE VACUUM VENT

Principle Of Operation



The valves have a cast body which is flanged for connection to the storage tank. A weather hood protects the pressure exhaust port and a mesh cover is fitted to prevent the ingress of foreign matter for valves vented to atmosphere. Piped-away versions are also available throughout the range.

Both the pressure and vacuum sides of the valve incorporate a pallet and diaphragm assembly which rest on an 'O' ring seal to prevent leakage. This 'O' ring can be removed and the seat machined optically flat, producing a metal to metal seating arrangement if required. The weight of the pallet pushes the diaphragm against the seat to keep it closed. When the pressure or the vacuum increases, the pallet and diaphragm lifts and air/gas is allowed to flow.